



Germany

Lauenburg

- 11.600 Inhabitants
- Next to the river „Elbe/Łaba“
- Size: 4,5 qkm
- Founded in 1209 by danish people, but the most part of the city was built in 16. Century till 18. Century
- Lauenburg was next to the border of Germany East and West

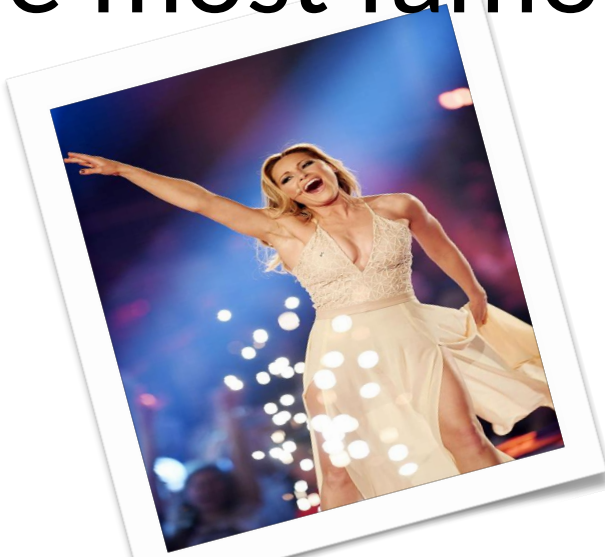


Capital Berlin

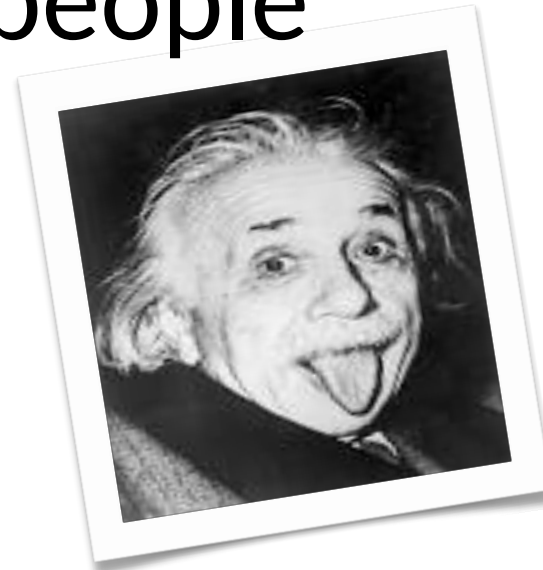
- Inhabitants: 3,7 mln.
- Size: 892 qmk
- The city with the most inhabitants in Germany and the EU.
- After the second world war till 1989 Berlin was divided in West and East. There were a big wall through the city.



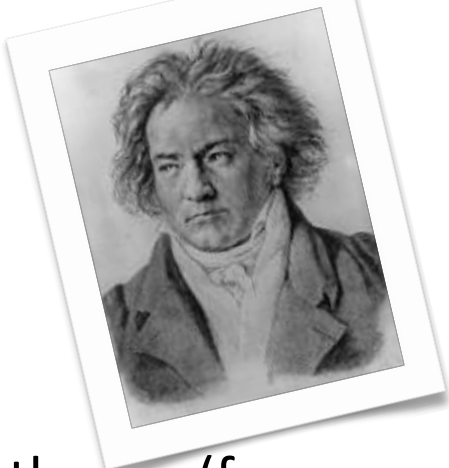
The most famous german people



Helene Fischer (famous singer)



Albert-Einstein (Physican, Alfred-Noble-Price 1921)

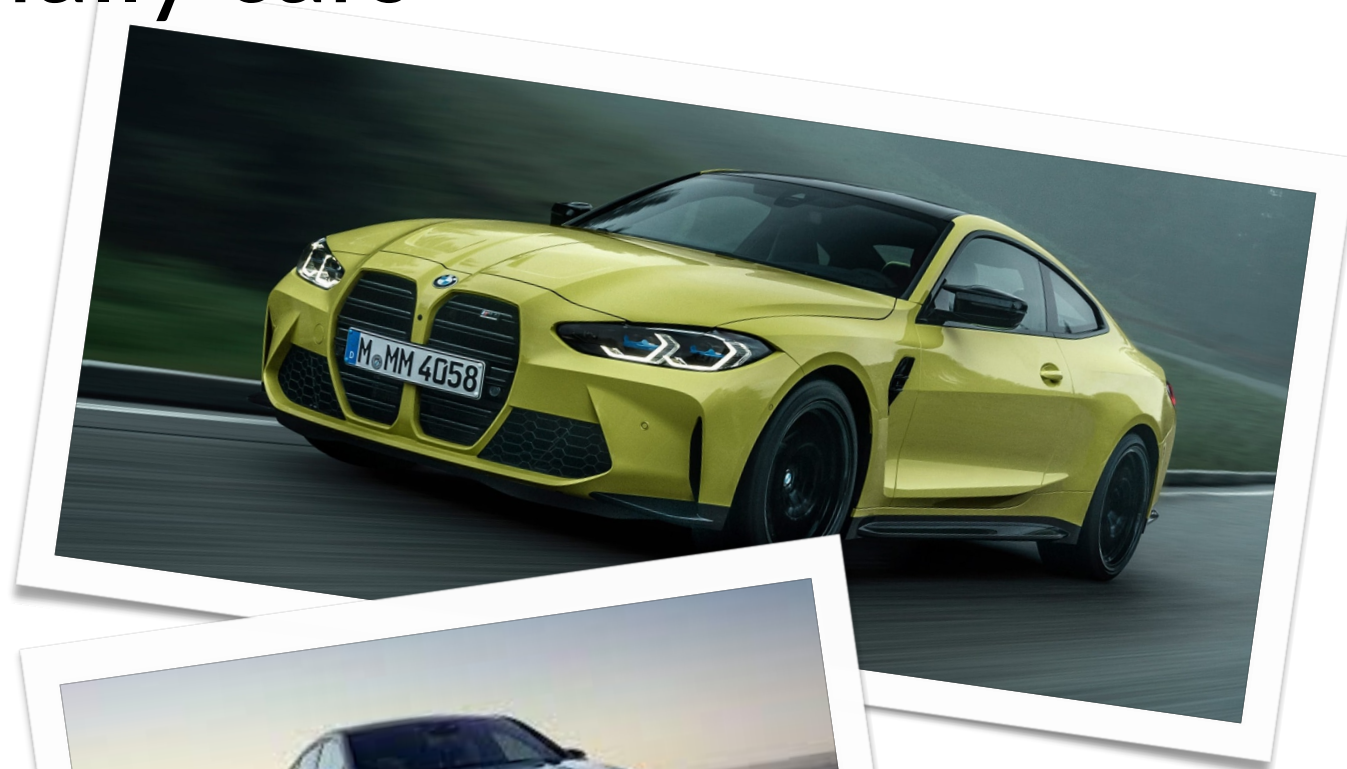


Beethoven (famous componist)

.....and german football players like Manuel Neuer the best Goal-Keeper of the world! ;)



Germany is also very famous for technology especially cars



Tongue-Twister



Danke für eure Aufmerksamkeit!

Thank you for your attention!

Dziękuję za uwagę!